



Atlas-400

Atlas Prox Series

Access Control Panels with built-in Web Application - No software required



Atlas-200



Atlas-100

State-of-the-art 1, 2 and 4 door access control panels with built-in Web Application eliminate the need for management software.



Advanced Access Control Features

No software required. Built-in Web Application provides advanced access control features including User Enrollment & Management, Door Control & Monitoring, Lockdown, Reporting, Maps, Anti-Passback, First-Card Opening, Multi-Card Opening, Card Design and Duress PINs.



Door Control and More

User-programmable auxiliary relays can be used to control lights, alarms, annunciators, intrusion detection panels, additional locking devices, or any other external electrical device which can be controlled by a switch.



Capacity

1 Primary panel can support up to 20 Secondary panels. Maximum 84 doors can be supported when using all 21 panels. Each Atlas Prox Series panel can store up to 5,000 users and 10,000 transactions plus unlimited archive downloads.



Choice of Readers

Atlas Series supports ZKTeco KR series & any 3rd-party readers which communicate with Wiegand or OSDP communication protocols.



Communication

Atlas Series panels communicate securely over wired & wireless TCP/IP networks using SSL/TLS. Supported browsers include Google Chrome, Mozilla Firefox and Microsoft Edge.



Mobile App

Numerous convenient features include: remotely unlocking doors, universal lockdown & recovery, access to events & alarms, adding/modifying users, and much more.



Power

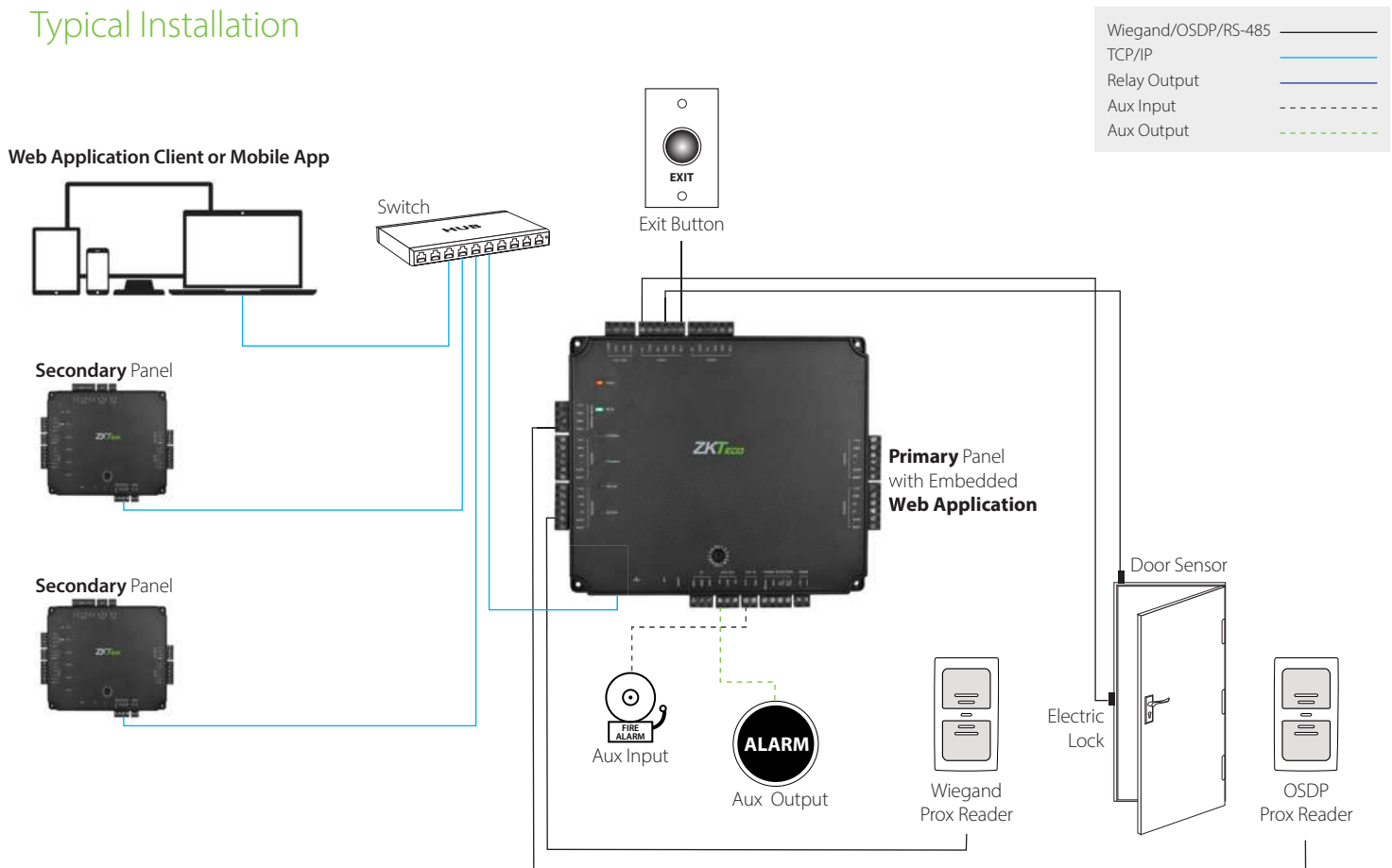
Atlas Series uses a 12V DC 3A power supply and also supports Power over Ethernet (PoE).



Lowest Total Cost of Ownership

Atlas Series panels come in several models to suit different project needs and reduce the cost of unused capacity. Easy-to-use embedded Web Application gets you up and running quickly. Firmware is field-upgradeable, allowing your system to stay current with the latest features and security enhancements.

Typical Installation



Specifications

Capacity

Users: 5,000

Event Database: 10,000 transactions plus unlimited archive downloads

Output Relays

3Form-C Relays - SPDT 5A@36V DC or 8A@30V AC

Communication

TCP/IP and Wi-Fi for network connectivity

RS485 for Wiegand & OSDP reader connectivity

Baud Rate for RS-485/OSDP

9600 bps

LED Indicator

Indications for power, communication, and tamper

Power

Consumption: 9W@12V DC 750mA

Power Supply: 12V DC 3A and PoE

Environment

Operating Temp: 32-113 °F (0-45 °C)

Operating Humidity: 20% to 80%

Optional Accessories



KR500E



KR500H



KR702E



KR500-OSDP



KR-500 BT



Prox Card



Prox-Keyfob



Atlas Prox Series Bundle

- 1 Atlas Prox Control Panel (model 100, 200 or 400)
- 1 Metal Case
- 1 12V DC 3A Power Supply
- 1 FR107 Diode (for each lock)
- 2 Keys for Metal Case

	Atlas-100	Atlas-200	Atlas-400
Number of Doors Controlled	One Door	Two Doors	Four Doors
Number of Readers Supported	2 (Wiegand or OSDP Readers)	4 (Wiegand or OSDP Readers)	8 (Wiegand or OSDP Readers)
Types of Readers Supported	ZKTeco KR Series readers and 3rd party 125kHz & 13.56MHz Wiegand, OSDP and RS-485 readers	ZKTeco KR Series readers and 3rd party 125kHz & 13.56MHz Wiegand, OSDP and RS-485 readers	ZKTeco KR Series readers and 3rd party 125kHz & 13.56MHz Wiegand, OSDP and RS-485 readers
Number of Inputs	3 (1 Exit Button, 1 Door Sensor, 1 Aux)	5 (2 Exit Buttons, 2 Door Sensors, 1 Aux)	9 (4 Exit Buttons, 4 Door Sensors, 1 Aux)
Number of Outputs	2 (1 Form C relay for lock and 1 Form C relay for Aux output)	3 (2 Form C relays for locks and 1 Form C relay for Aux output)	5 (4 Form C relays for locks and 1 Form C relay for Aux output)
User Capacity	5,000	5,000	5,000
Events Database Capacity	10,000 transactions plus unlimited archive downloads	10,000 transactions plus unlimited archive downloads	10,000 transactions plus unlimited archive downloads
Weight	9 lbs (3.8 kg)	10 lbs (4 kg)	10 lbs (4 kg)
Communication	TCP/IP, Wi-Fi, Wiegand, OSDP	TCP/IP, Wi-Fi, Wiegand, OSDP	TCP/IP, Wi-Fi, Wiegand, OSDP
Browsers Supported	Chrome, Firefox, Edge	Chrome, Firefox, Edge	Chrome, Firefox, Edge
Enclosure	Powder Coated Aluminum	Powder Coated Aluminum	Powder Coated Aluminum
Mounting	Wall Mount	Wall Mount	Wall Mount
Recommended Power Supply	12V DC, 3A (PoE)	12V DC, 3A (PoE)	12V DC, 3A (PoE)
Dimensions (Bundle Only)	14in. X 2.5in. X 12in. 380mm(L) X 80mm(W) X 280mm(H)	14in. X 2.5in. X 12in. 380mm(L) X 80mm(W) X 280mm(H)	14in. X 2.5in. X 12in. 380mm(L) X 80mm(W) X 280mm(H)
Dimensions (Board Only)	6.3in. X 4.17in. (160mm X 140mm)	7.75in. X 6.73in. (197mm X 171mm)	7.75in X 6.73in. (197mm X 171mm)

